

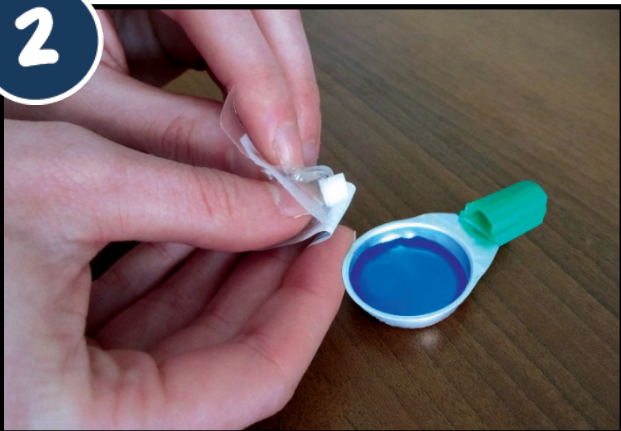
FILTER RESOURCE GUIDE

1



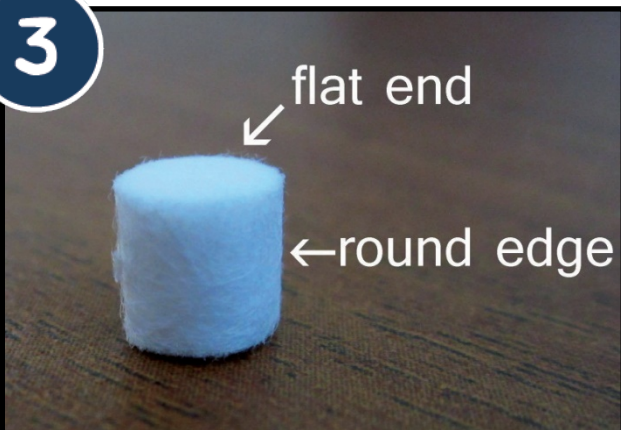
Wash your hands and clean your prep area with an alcohol swab.

2



- Before opening the filter packet, pinch the filter with your fingers so it doesn't fall out when you open the packaging.
- Once your drug solution has been heated to a boil (and bubbles appear) and allowed to cool, place a sterile filter into

3



Make sure the flat end of the filter is facing up. Trying to push the needle into the round edge may cause it to bend or

4



Insert the syringe into the flat end of the filter with the bevel of the needle facing down.

5



Make sure the tip of the needle is in the centre of the filter and has not pierced all the way through.

6



Use a proper bio-hazard container to dispose of the used filter and all other injecting equipment.

COOK YOUR DRUGS EVERY TIME

Talk to your harm reduction site about the use of filters and other supplies they have available.